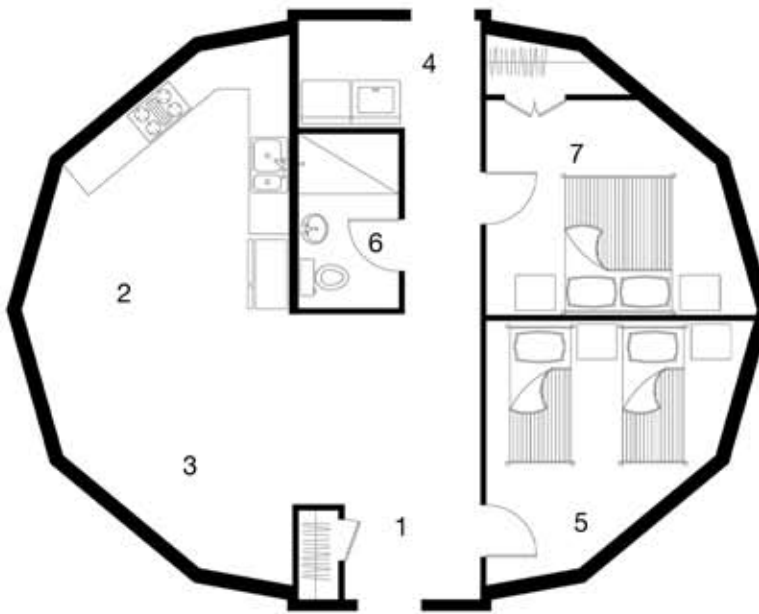


The Domicile



This version of the ARCX 29 model is a very flexible structure that utilizes 900 sq. ft. of open space. The footprint is a compact 30' x 37'. The 8' extension allows for 2 vertical doors and windows to bring in lots of daylighting. The open floorplan can be configured many ways and has no interior walls that bear weight. This can be built on a slab, crawl space or basement and the components are light enough to be assembled without heavy equipment.

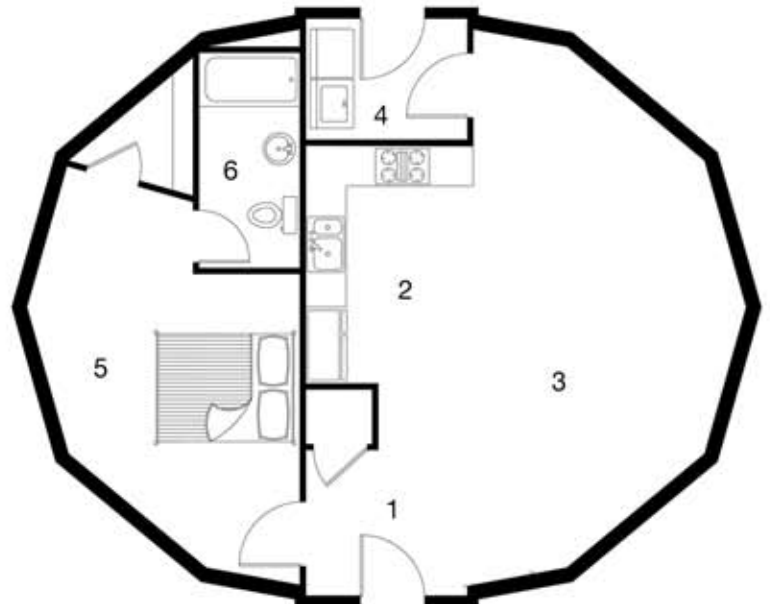
8" SIP walls/roof offer an insulation value of R-33 to the whole structure and the airtight SIP construction means that it hardly needs a HVAC system. This home is a great design to design to zero energy. This kit comes on one 40' truck and includes all the pre-cut panels, infill lumber, beams, glue and screws to construct the shell of the building. We also provide openings for 2 doors and 6 window/ skylights. Riser kits and extra extensions are also available.



Base Domicile kit starts at

\$19,370*

* Does not include taxes or shipping.
Call for current pricing.



1. Entry
2. Kitchen
3. Living Room
4. Laundry Room
5. Bedroom
6. Bathroom
7. Bedroom