

# ARCX 29' -9

This compact ARCX structure makes great use of the rectilinear interface. The 9' extension allows vertical door placement and egress windows on the second level. The open plan has 920 sq. ft. on the main level and 550 sq. ft. on the second level. This is drawn as a 3 bdrm/ 2 ba family home that will be affordable and super energy efficient. The foot print of the Transition 29-9 is only 30' x 38' and can fit on many infill city lots. The kit contains the precision cut panels with all window and door openings. The accessories include the plates, all infill lumber, screws, glue, expanding foam and housewrap. The building comes with 2 door openings, 13 window openings and one skylight opening.

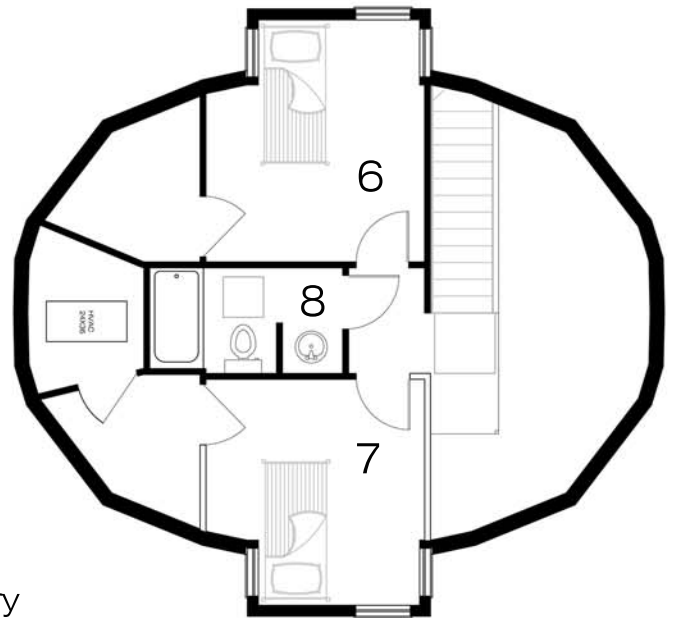
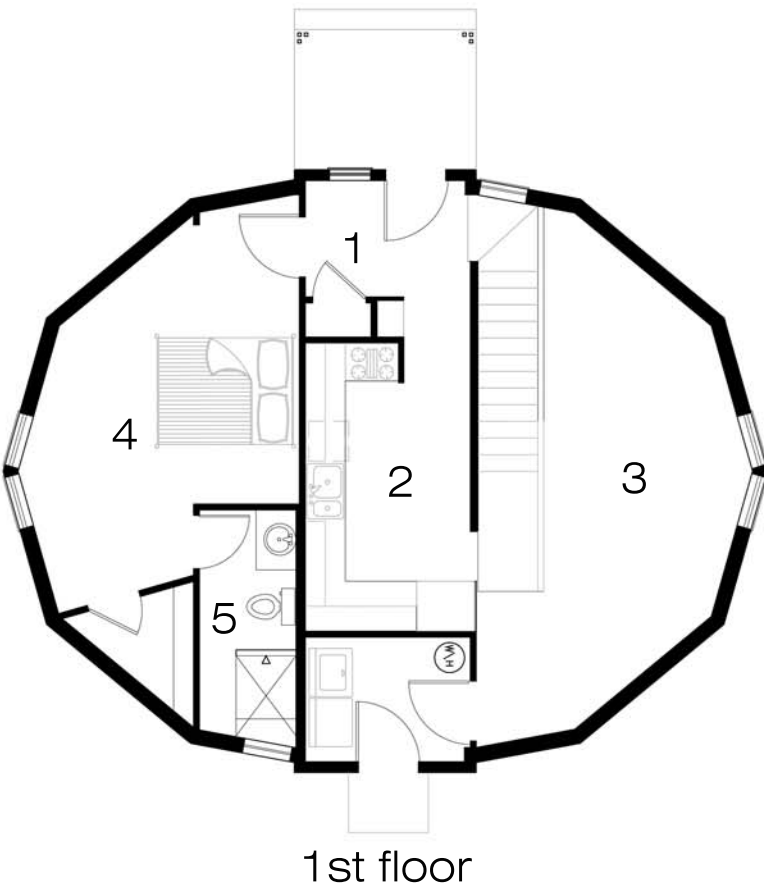
We use an 8" SIP panel (R-33) for the dome triangles, 6" SIP vertical walls (R-26) and 10" SIP roof and risers (R-40) for the strongest, most energy efficient shell in the industry. The air-tight SIP assembly means this building is near zero energy consumption even before heating and cooling is considered. The dome shape and SIP connection details mean safety for your family in the worst weather Mother Nature can bring. We can pre-apply Blazeguard fire resistant coating to the interior of the dome panels.



ARCX 29-9 Base Kit \$ 24,805

Add for Blazeguard \$ 3,373

\*Packages do not include taxes or shipping



1. Entry
2. Kitchen
3. Living Room
4. Master Bedroom
5. Master Bathroom
6. 2nd Bedroom
7. 3rd Bedroom
8. 2nd Bathroom